

Digital Mass Flow Meter with Display

Upcoming Product

EXE-FLOW MODEL EX-700 SERIES

Features

- Flow rate measurement accuracy $\pm 1.5\%$
- Corrosive gas available
- Particle free

EXE-FLOW means Exact accurate flow measurement, and Excellent function. It covers from small flow rate (0.2ml~10ml/min) to large flow rate (4ℓ~200ℓ/min).

11 range standard stock will be prepared for fast delivery.

With the newly developed EX sensor, each flow measurement accuracy is guaranteed within $\pm 1.5\%$. The material of gas contact is SUS316 and it can be used for corrosive gas.



- Low cost model with high performance sensor
- Compact design, Single power supply connection
- Gas contact part material : SUS316L, FKM, PTFE
- RS-485 communication function
- RoHS, CE compliant
- Flow range other than standard stock can be produced
- Possibility to offer with discount schedule

■ EXE-FLOW standard specifications

Sensortype	Thermal (EX sensor)	
Applicable gas	N ₂ , Air, H ₂ , He, Ar, O ₂ , CO ₂ etc. (corrosive gas available)	
Flow range ※1	10SCCM ~ 50SLM	100, 200SLM
Response	within 2sec	
Accuracy	$\pm 1.5\%$ F.S.(25°C)	
Repeatability	$\pm 0.2\%$ F.S.	
Proof pressure	980kPa(G)	
External leak rate (He)	1.0 × 10 ⁻⁸ Pa · m ³ /sec	
Temp.	Working Temp.	5 ~ 50 °C
	Allowable storage temp.	-10 ~ 60 °C
Materials of gas contact part	SUS316, SUS316L, PTFE, FKM	
Flow output signal	4-20mA Standard	
	(Optional 0-5V, 1-5V)	
Digital communication	RS485 (MODBUS protocol, RTU mode)	
Event output	2 x NPN open collector output	
	Maximum rating DC30V 50mA	
Multi gas function	Gas selection on display (C.F.)	
Required power supply (DC)	+24VDC ($\pm 10\%$) 100mA	
Joint ※2	1/4FSWL (standard)	3/8SWL (standard)
Precision Needle valve (option)	MODEL 2412	MODEL 2412D
Dimensions	W76×D30×H80	W76×D34×H90

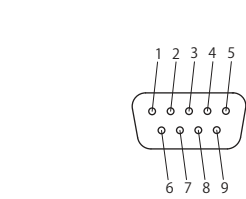
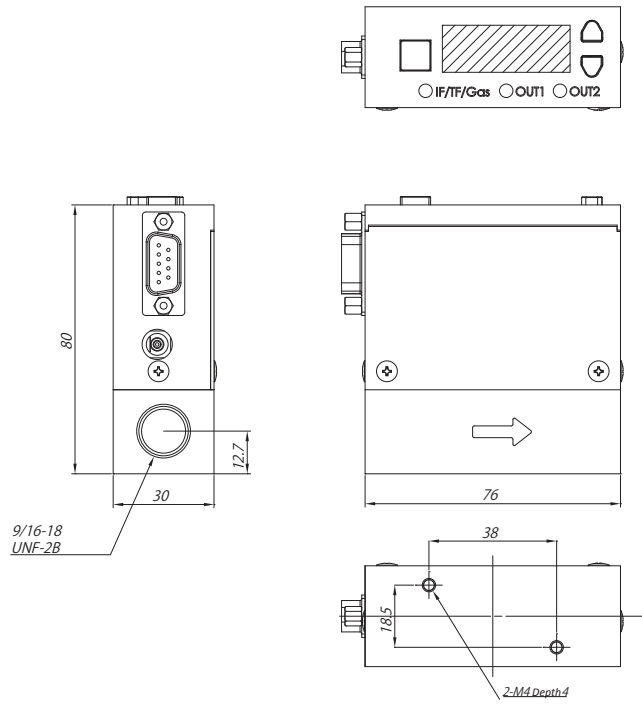
※1 The flow rate calibration units SCCM and SLM indicate a mass flow rate converted to a volume flow rate in cc/min and L/min at 0°C and 1atm.

※2 Contact us for any other joints.

※3 The specifications are subject to change without notice.

Dimensions

full scale 10SCCM~50SLM

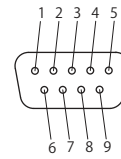
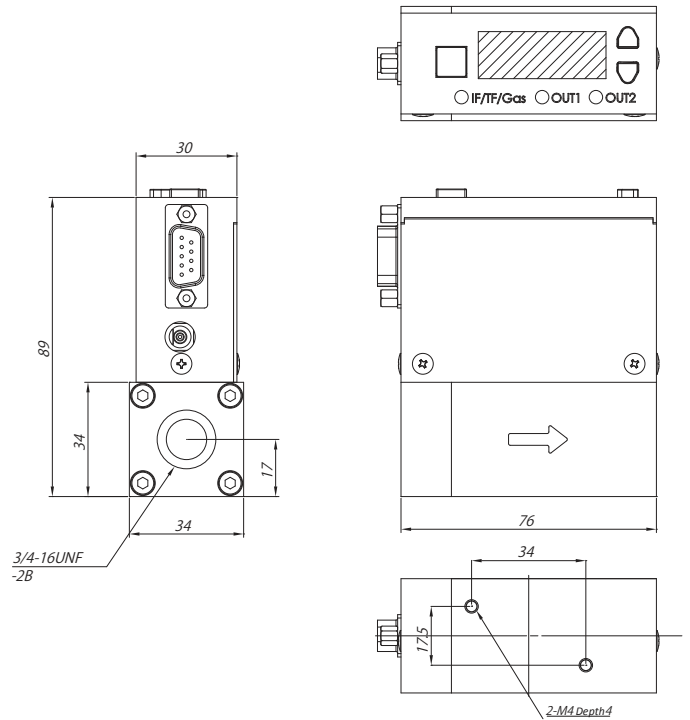


① Dsub connector (male)

PinNo.	Signal name
1	power+24V
2	power COM
3	OUT1
4	OUT2
5	OUT.COM
6	output Vout
7	TR+(RS485)
8	TR-(RS485)
9	TRCOM(RS485)

※without joints

full scale 100,200SLM

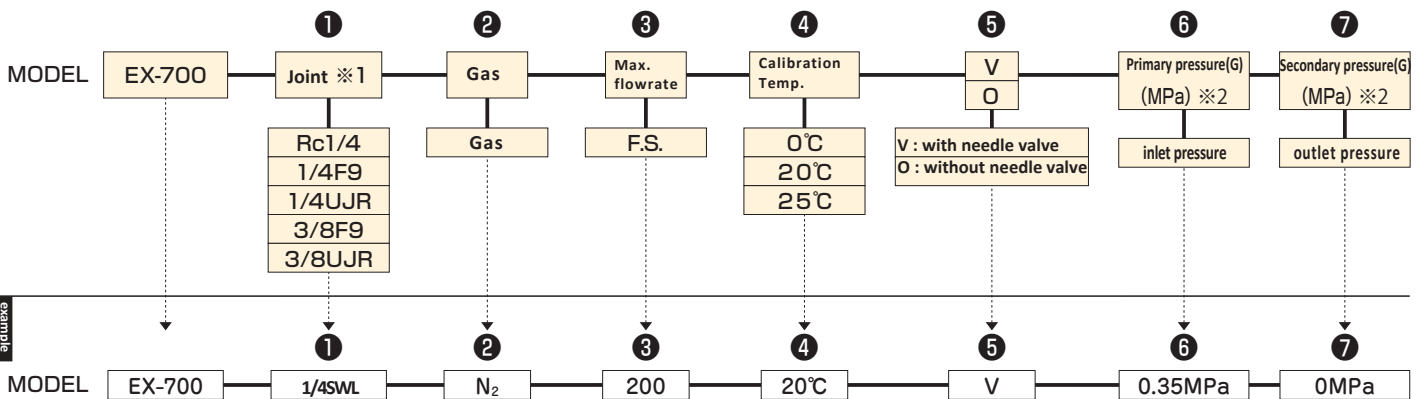


① Dsub connector (male)

PinNo.	Signal name
1	power+24V
2	power COM
3	OUT1
4	OUT2
5	OUT.COM
6	output Vout
7	TR+(RS485)
8	TR-(RS485)
9	TRCOM(RS485)

※without joints

Ordering



※1 : Joints would be 3/8SWL or 3/8VCR when the flow rate over 100L.

※2 : Pressure condition would be needed when needle valve option is selected.

Contact

Scientific approach to fluids

コジマ株式会社

KOJIMA INSTRUMENTS INC.(OVERSEAS SALES DEPT.)

1-3 Atenoki,Kusauchi,Kyotanabe,Kyoto 610-0311,JAPAN

PHONE : +81-774-68-2626 FAX : +81-774-68-2066

E-mail : overseas@kofloc.co.jp

URL: http://www.kofloc.co.jp/kofloc_e/product/index.html

【Information】

100%-owned local corporation established in Shanghai, China (April 2, 2013)